

## The installation and registry of GstarCAD2010

- **The installation of GstarCAD**

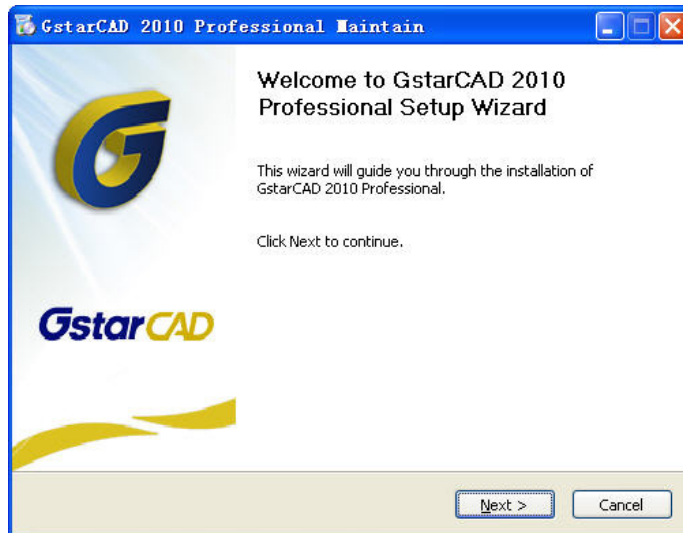
The GstarCAD installation program will lead you to finish the installation, the installation program will automatically create a folder which contains all programs, at the same time a program startup bar will be created at the “Start” menu of Windows, a shortcut icon will be created at desktop.

Users can use CD or copy installation program to your personal PC or the hard disc of server to install.

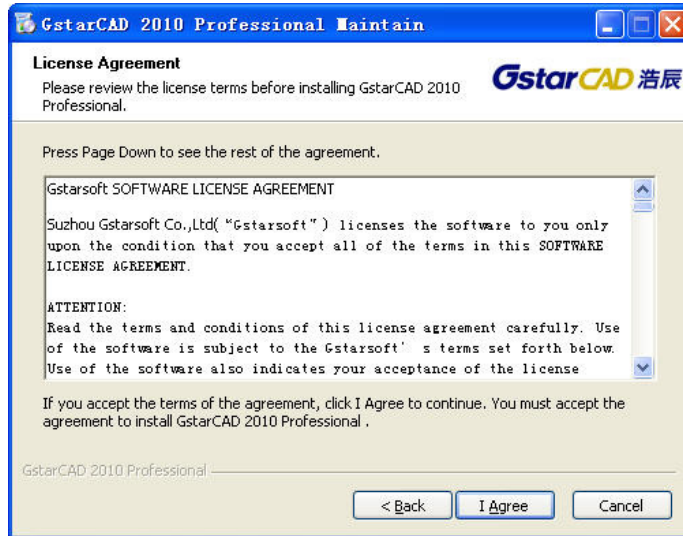
### **Install steps:**

1. Enter the GstarCAD installation content, double-click the execute file, the installation setup interface is displayed and prompt that user system is preparing “Installation wizard” and do some preparation for installation.

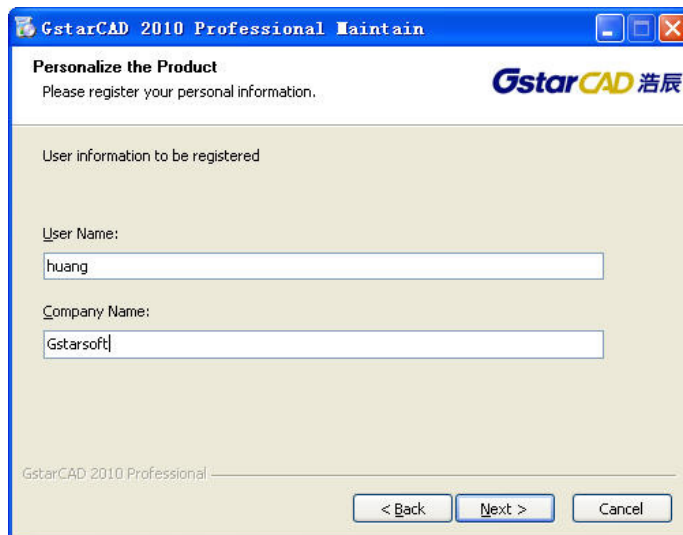
2. After “Installation wizard” finishes installing, Installation wizard dialog is displayed. Click “next” button to continue installing.



3. “License Agreement” dialog box is displayed, as the below picture, if you agree with the agreement, click “I Agree” to continue

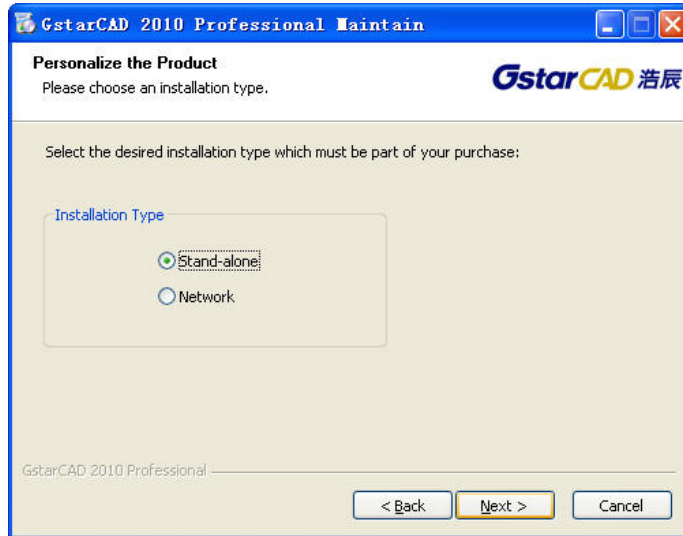


4. The user information dialog box is displayed, after you inputting user information, click “Next” button



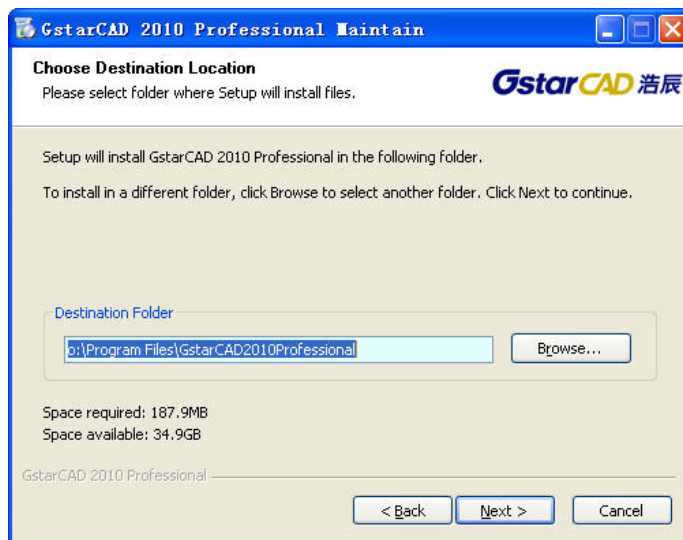
5. “Installation type” dialog box is displayed, as the below.

If you buy Stand-alone version or try software, you can use the default stand-alone to install; if you buy the network version, please select “Network” to install.

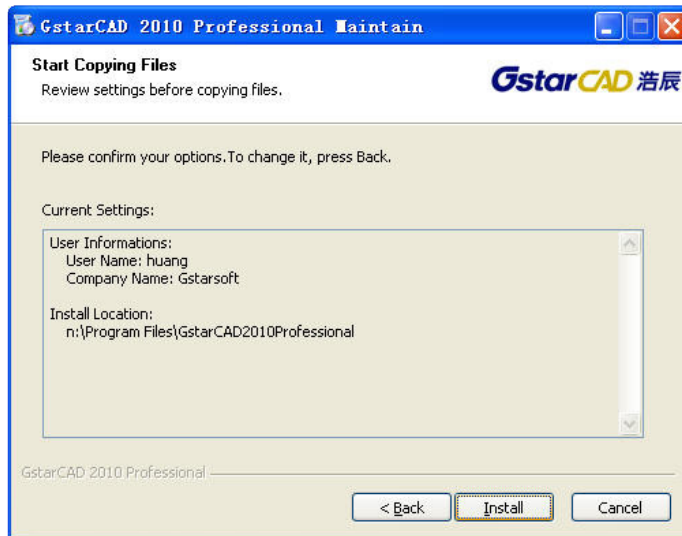


6. After you select the right installation type, click “Next” button, “Choose Destination Location” dialog box is displayed, as the below.

Click “Browse” button to select another folder.



7. Click “Next” button, “Start Copying Files” dialog box is displayed, user can check or modify the inputted information through this dialog box. If there are some information to modify, click “Back” button to return to the last dialog box to modify; If there are no information to modify, click “Next” button and the system begin to install the software.



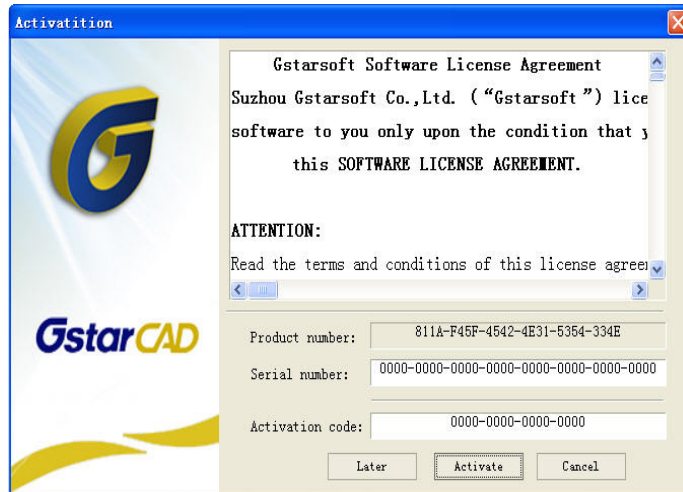
Click "Finish" to complete the software installation

- **The registry of GstarCAD2010**

### **1. Registration Number**

The operation step about registration number is below:

- 1). Install the stand-alone GstarCAD2010
- 2) Click Help>Register, GstarCAD2010 will generate a serial number, this serial number is corresponding to your computer



- 3) You should send the serial number to our company, we will calculate a activation number to you according your serial number.

Note: The tryout limit is 30 days, there is no function limitation in the tryout days, but you had better complete the registration before tryout expiration.

- 4). Open “Activation” dialog box, input the activation number, then click Activate button to finish register
- 5). Restart GstarCAD2010, and check whether the software has been activated.

### **2. Dongle**

Dongle is divided into stand-alone version and network version.

#### **Stand-alone dongle**

A stand-alone version belongs to a single customer, you needn't install driver, software will finish the register automatically after user plug in the dongle.

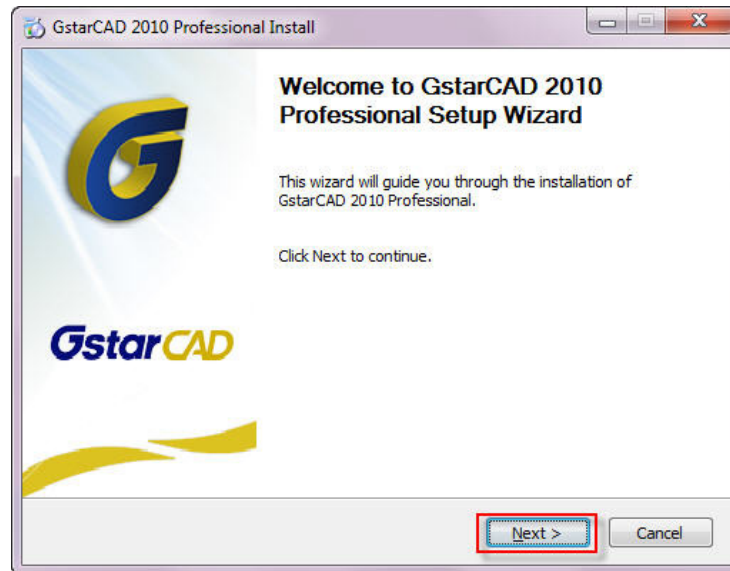
#### **Network dongle**

#### **Installation**

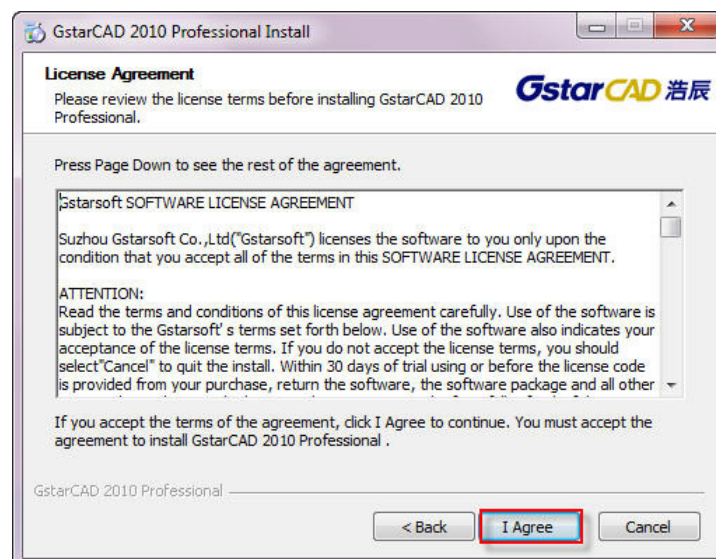
Customer-end or Server can use CD or installation program to install.

Install steps:

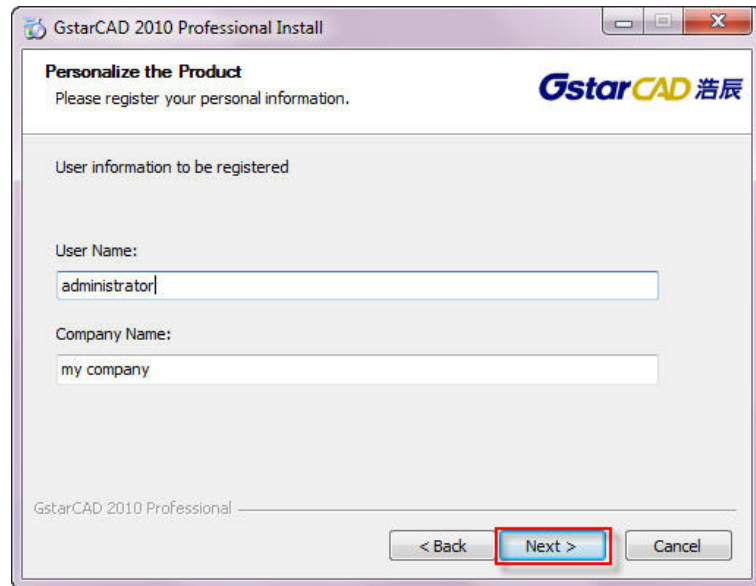
1. Enter the GstarCAD2010 installation content, double-click the execute file, the installation setup interface is displayed and prompt that user system is preparing “Installation wizard” and do some preparation for installation.
2. After “Installation wizard” finishes installing, Installation wizard dialog is displayed. Click “next” button to continue installing.



3. “License Agreement” dialog box is displayed, as the below picture, if you agree with the agreement, click “I Agree” to continue

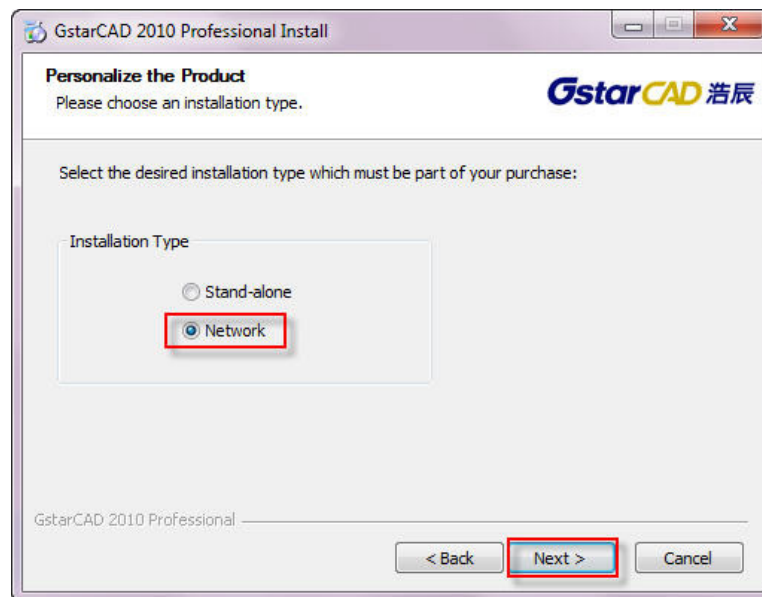


4. The user information dialog box is displayed, after you inputting user information, click “Next” button

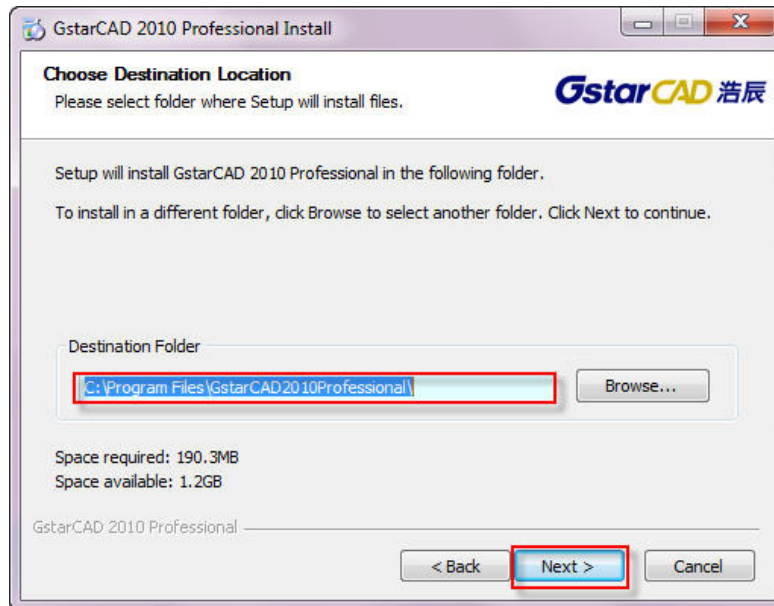


5. "Installation type" dialog box is displayed, as the below.

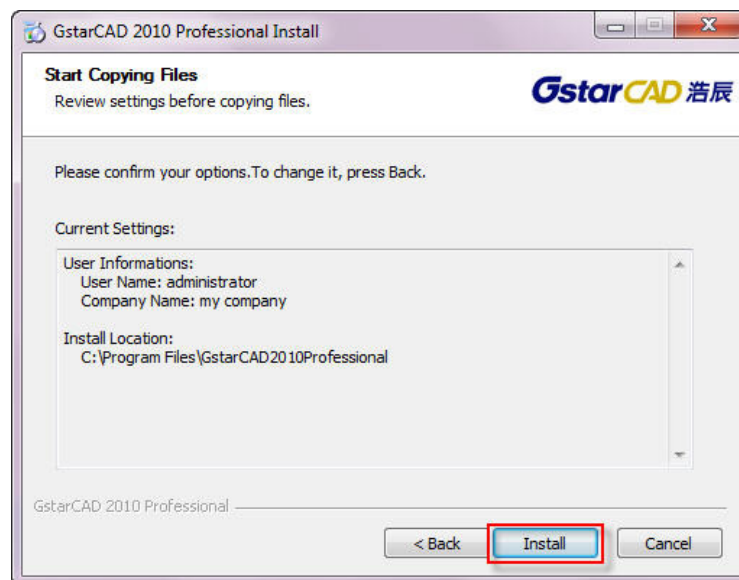
If you buy Stand-alone version or try software, you can use the default stand-alone to install; if you buy the network version, please select "Network" to install.



6. After you select the right installation type, click "Next" button, "Choose Destination Location" dialog box is displayed, as the below. Click "Browse" button to select another folder.



7. Click “Next” button, “Start Copying Files” dialog box is displayed, user can check or modify the inputted information through this dialog box. If there are some information to modify, click “Back” button to return to the last dialog box to modify; If there are no information to modify, click “Next” button and the system begin to install the software.

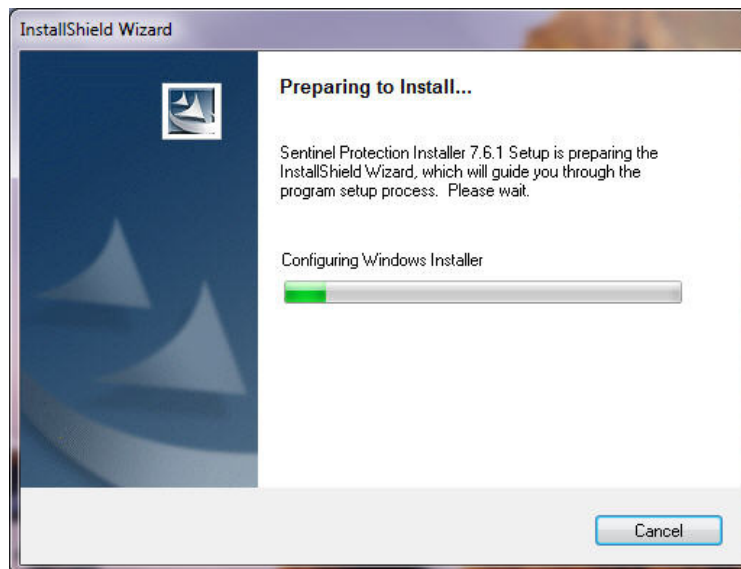


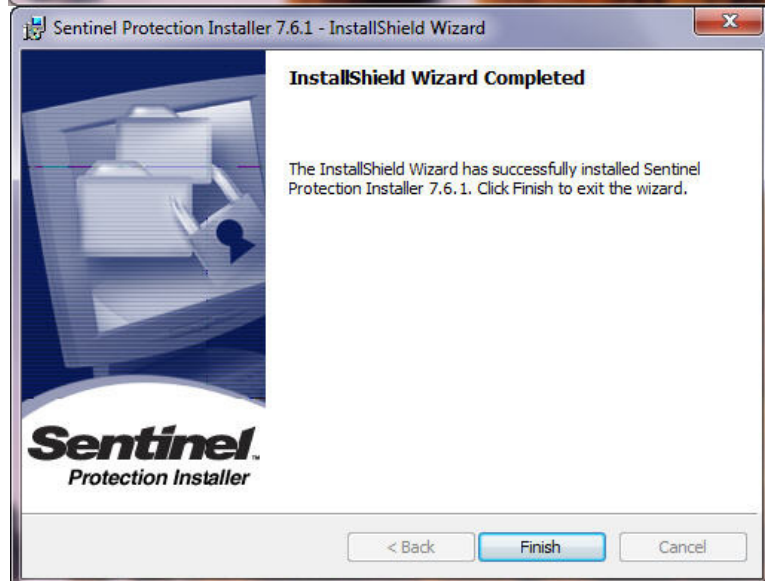
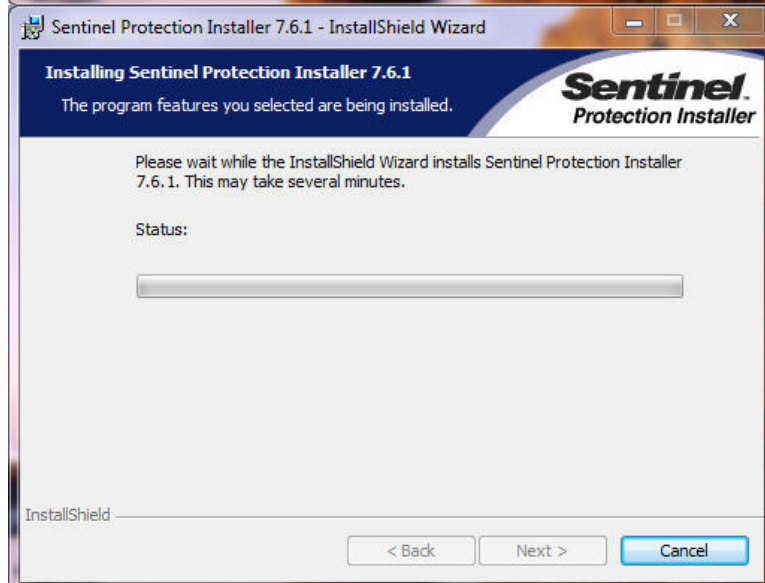
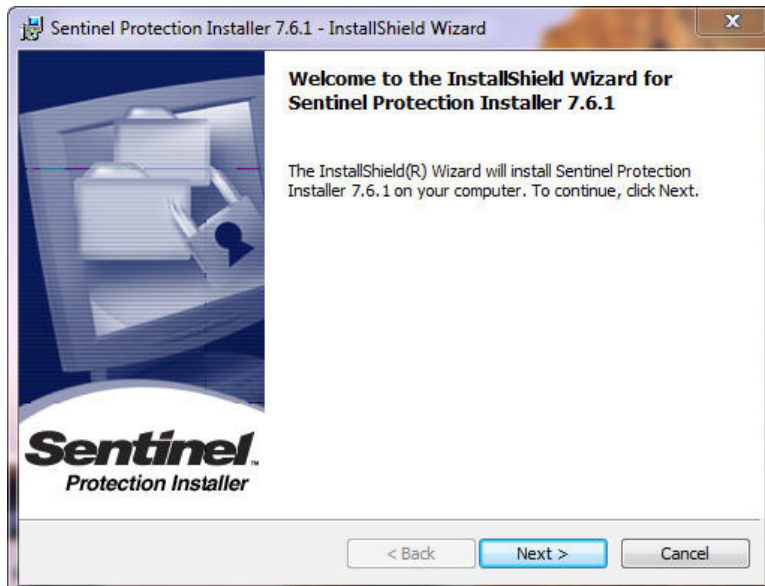


Click “Finish” to complete the software installation

### Activation

Network version should be activated on the server (any computer in network), but the number of users should limit within the authorized number by the network lock. Please select any a computer as the server, and install network lock driver at this server computer. Then plug in the dongle to the server computer. Once customer-end starts GstarCAD2010, and it will automatically search for network lock to finish registering  
The process of installation driver:





After installation driver, please plug dongle into the server computer, then start the GstarCAD2010, you will see a interface that has been registered successfully.

